

Making/writing/burning a CD

What is “burning” a CD? Making, writing, and burning a CD are synonymous.

Why would I want to burn a CD? When you burn a CD, you can:

1. Copy a software program CD for back-up.
2. Copy a music CD for playing in the car.
3. Back-up data.
4. Make a music CD from several CDs.
5. Transfer large data from one computer to another. One CD can contain the data from 450 floppy disks.
6. Make coasters (Making a CD that doesn't function correctly.)

Definitions of CD drives and media (disks).

- CD-ROM: Read-only memory. Cannot write to a CD-ROM drive. Most computer come with a CD-ROM drive.
- CD-R: Write-once. Cannot re-write CDs. Cannot burn CD-RW disks.
- CD-RW: Re-write CDs numerous times. Can burn CD-R and CD-RW disks.

CD-ROM disk usually contain programs.

CD-R disk can be written by CD-R and CD-RW drives.

CD-RW disk can be written only by a CD-RW drive.

A CD-ROM drive can only read disks. It cannot burn disks.

A CD-R drive can write CD-R disks. It cannot re-write disks. It can read all disks.

A CD-RW drive can write CD-R disks. It can write and re-write CD-RW disks. It can read all disks. Thus, it is suggested that you buy a CD-RW drive. These are fast-becoming the only CD-burning drives available.

Music must be burned onto a CD-R disk. Music burned onto a CD-RW disk cannot be played on a CD music player.

Data can be burned onto a CD-R disk and a CD-RW disk, and can be read by any CD drive used on a computer.

CD disks can be purchased on a spindle or with cases.

CD-RW drives can be internal or external. Internal drives are usually faster but external drives can often be used by more than one computer.

Types of connections:

- EIDE and IDE: Normal internal connector of a computer.
- Parallel: Usually used for the printer but can also be used for a scanner and CD burner. Slowest speed.
- USB: Faster speed. New computers have USB connectors for external drives.
- SCSI: Faster speed. Usually needs a card installed in the computer.
- Fire Wire: Fastest speed at this time. Not found on older computers. Usually needs a card installed in the computer.

Making/writing/burning a CD

Media and drives are available at numerous speeds, such as 4X, 8X, 12X. Higher numbers will enable faster burning of CDs. If time matters to you, buy the fastest media and drives that your budget will allow.

When burning a CD, any interruption of data flow, such as using the computer for other uses, will cause a coaster to be made. CD-RW drives with BURN-Proof technology enable a computer to be used for other uses while a CD is being burned. BURN-Proof technology almost eliminates the making of coasters. The word "BURN-Proof" is a Trademark of SANYO Electric Co., Ltd. Information on the BURN-Proof technology is available at:

<http://www.sannet.ne.jp/BURN-Proof/>

Street prices, as of 6/10/01:

CD-R disks (12X) with jewel case; 10-pack: \$8.14

CD-R disks (12X) on spindle; 50-pack: \$8.00

CD-RW disks (12X) on spindle; 50-pack: \$20.00

CD-RW drive, Plextor 12/10/32, internal EIDE, with BURN-Proof technology: \$169

CD-RW drive, 12/8/32, internal EIDE, without BURN-Proof technology: \$108

CD-RW drive, 4/4/24, internal EIDE, without BURN-Proof technology: \$66

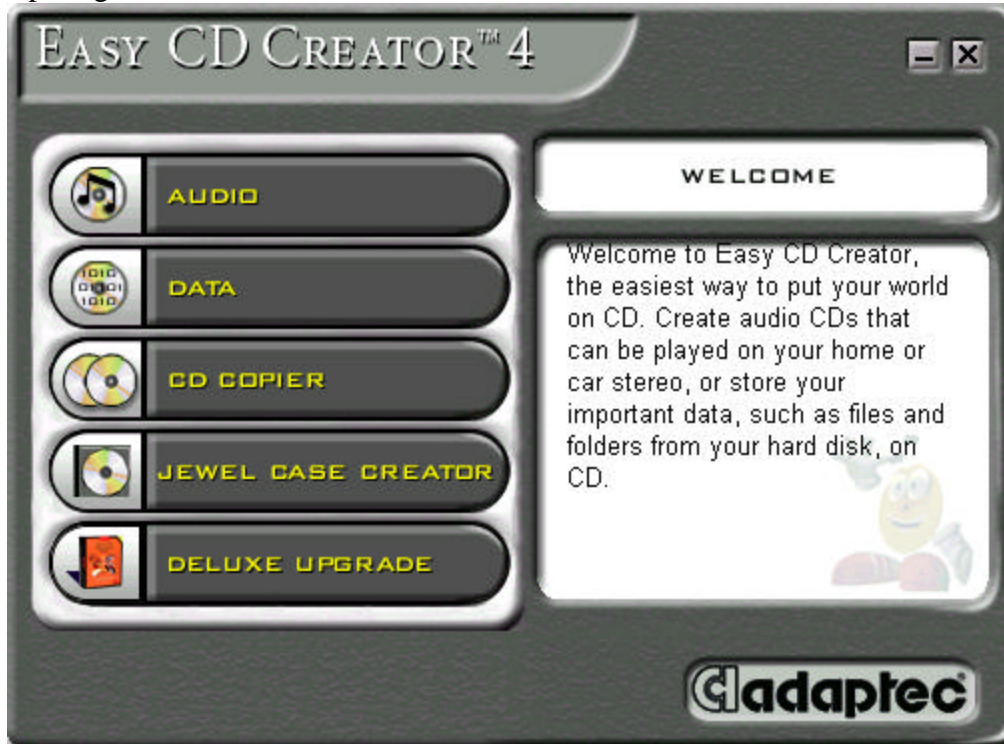
CD-RW drive, 4/4/8, external USB, without BURN-Proof technology: \$180

CD-RW drive, 4/4/20, external fire-wire, without BURN-Proof technology: \$275

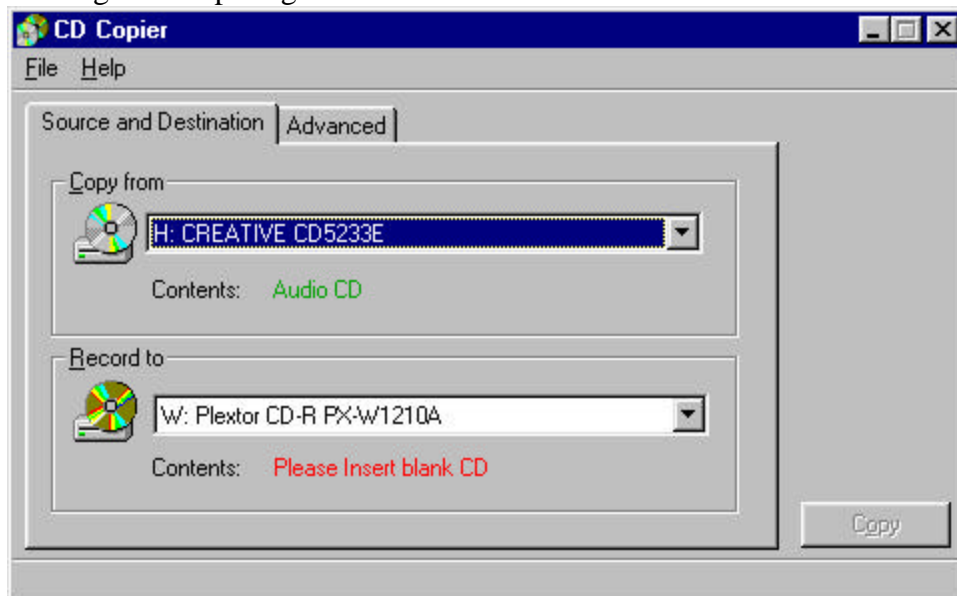
Making/writing/burning a CD

Software: Adaptec's Easy CD Creator comes with many CD burners. It is easy to use.

Opening window:



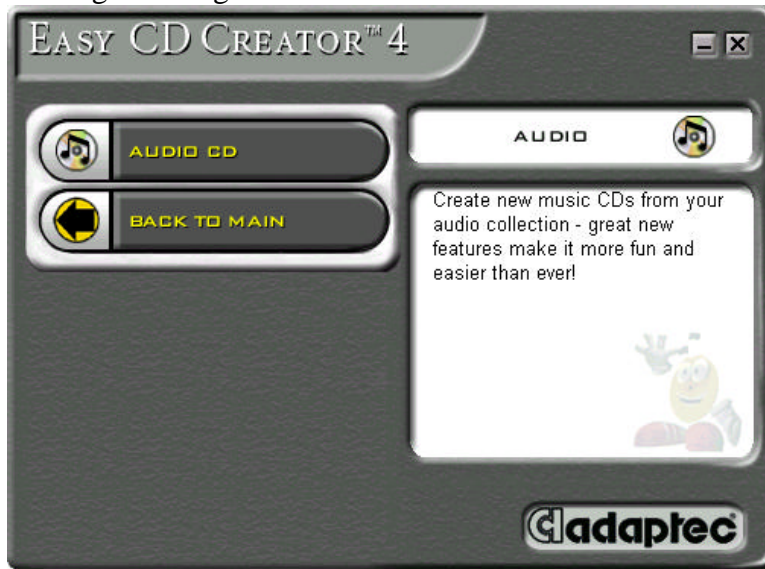
Clicking "CD Copier" gives this window:



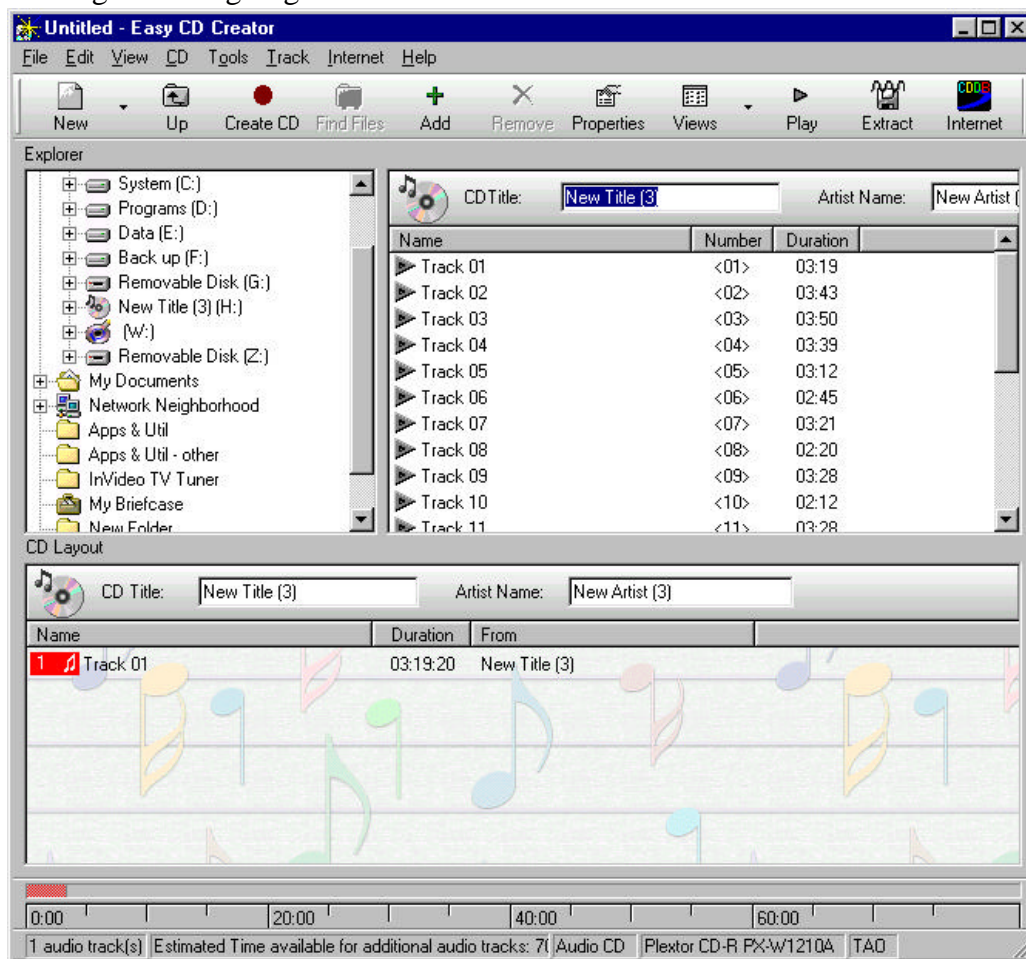
Insert a CD and click "Copy".

Making/writing/burning a CD

Clicking “audio” gives this window:



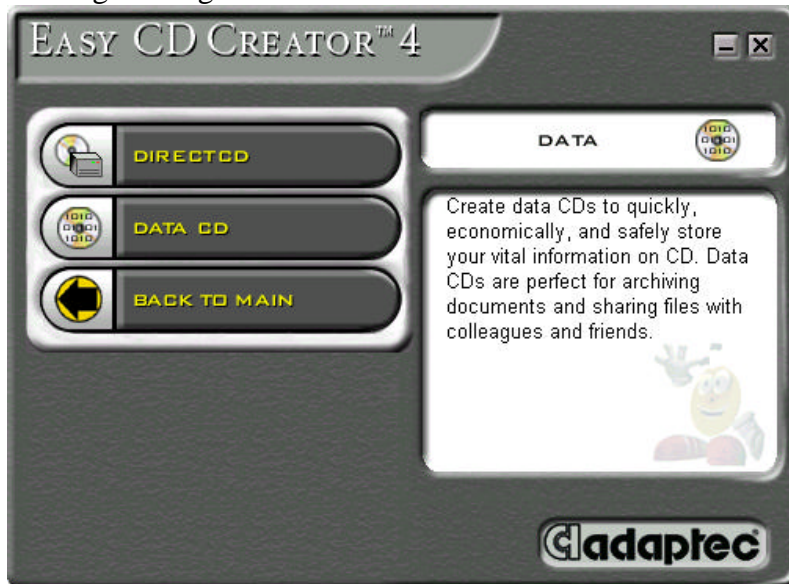
Clicking “audio” again gives this window:



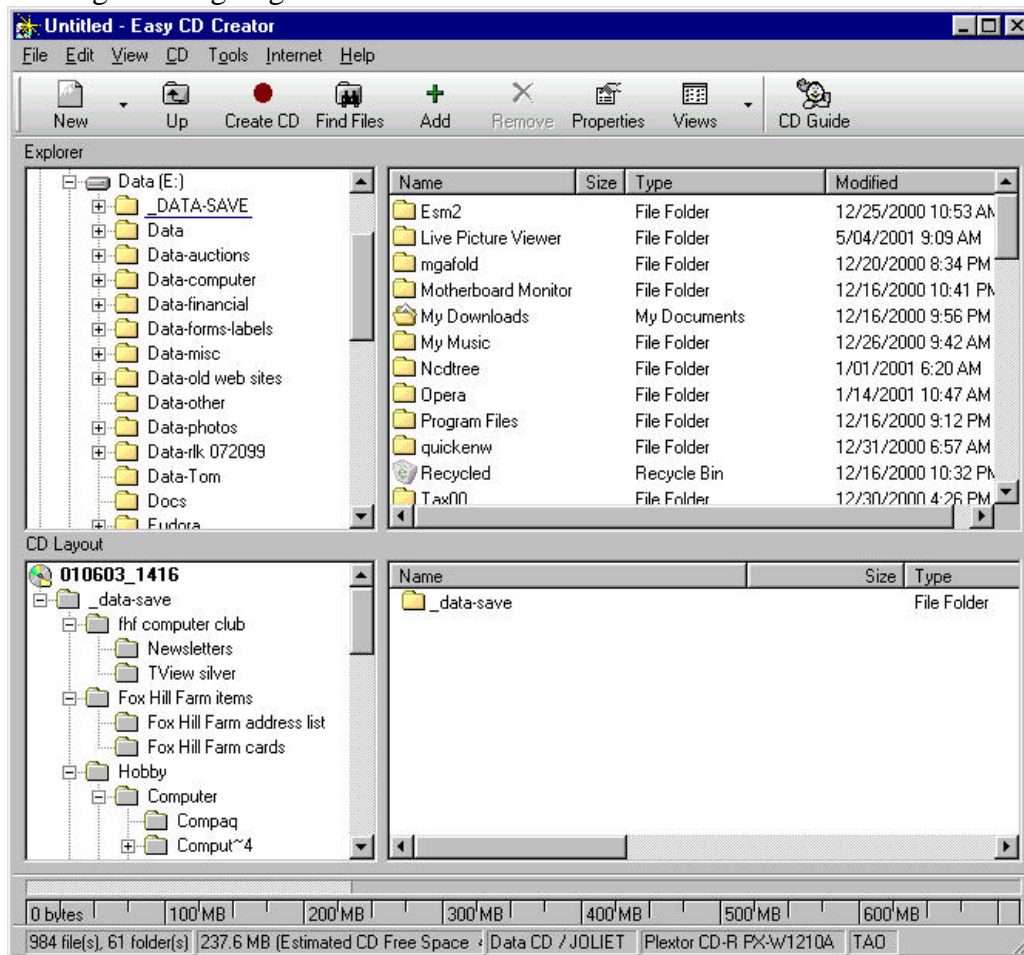
Drag the tracks you want to copy, to the lower portion of the window. Track 01 is shown as an example. Then click “create CD”.

Making/writing/burning a CD

Clicking “data” gives this window:



Clicking “data” again gives this window:



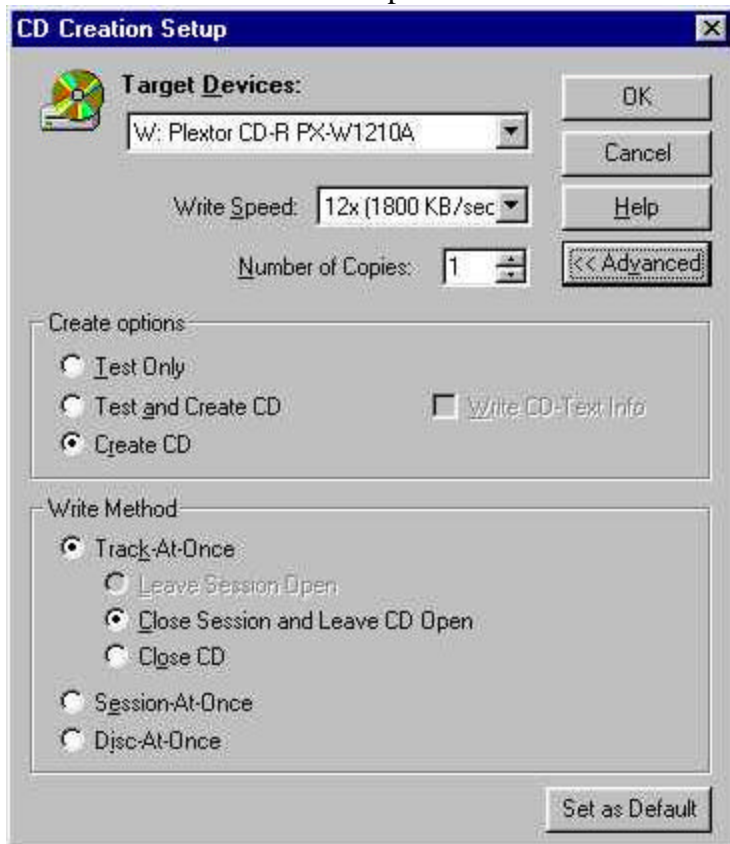
Drag the files and folders that you want to back-up or transfer, to the lower-right portion of the window. “Data-save” is shown as an example.

Making/writing/burning a CD

Click “create CD”. You get this setup window.

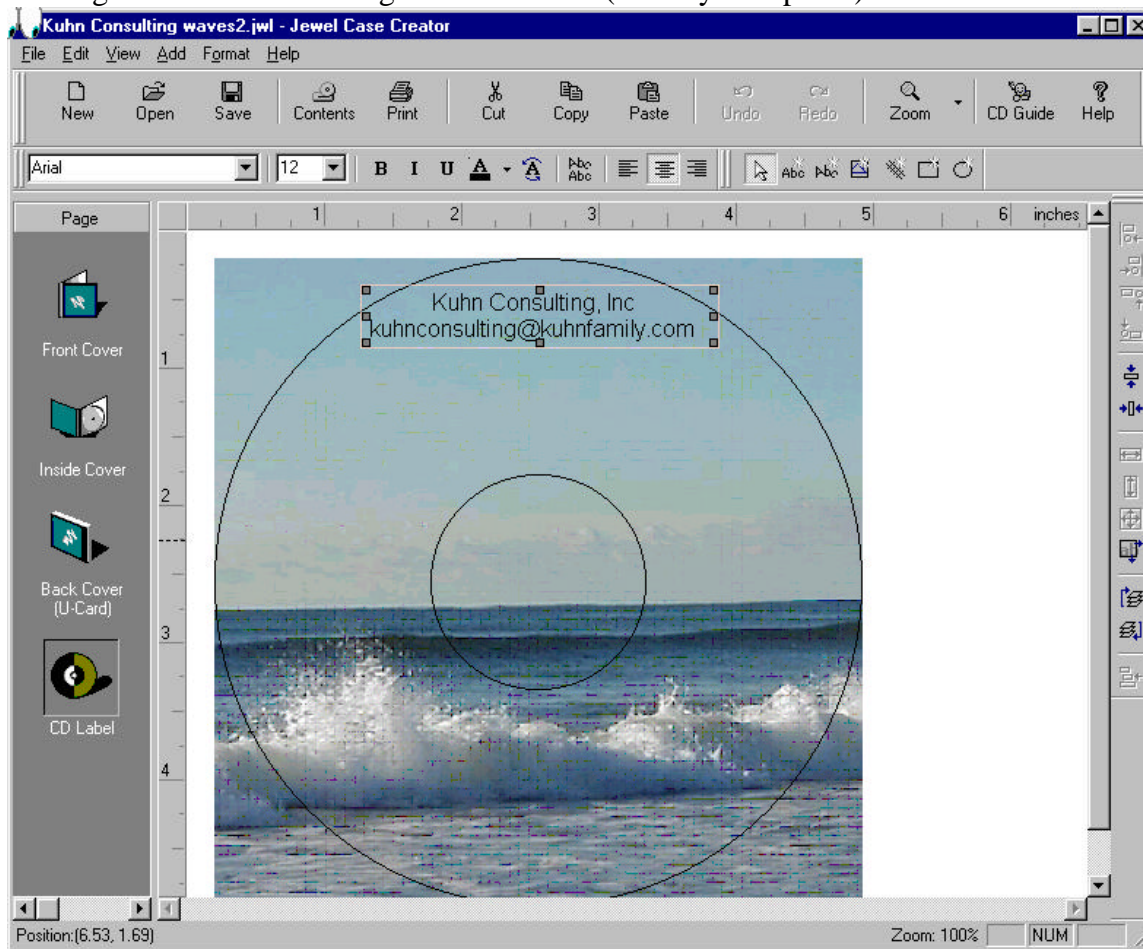


Click “advanced” to set these options:



Making/writing/burning a CD

Clicking “Jewel Case Creator” gives this window (with my file opened).



The CD disk is inserted into the CD burner with the silver or label side up, and the color-tinted side down. Don't touch the color-tinted side when handling the CD disk. Felt tip markers or special labels can usually be used for writing the content of the burned CD disk, on the silver or label side.

Use “Jewel Case Creator” to print onto special paper with adhesive on the back. A special device such as “CD Stomper” is needed for applying the label to the CD disk so the disk is correctly balanced with being spinning in a drive.